

# UNIVERGE® SP350 Softphone



# With the SP350, employees will have the communications tools they need to work efficiently and productively



## At a Glance

- Fully-featured, multimedia IP softphone
- Ability to share real-time information and ideas
- Easy-to-use intuitive interface
- Improve efficiency and productivity

## Overview

In today's work environment, employees require communication tools that allow them to easily share real-time information and ideas as well as provide them with the flexibility to work from different locations. NEC's UNIVERGE SP350 Softphone provides employees with a versatile, converged communications tool that offers an impressive array of high quality video, audio, voice and text features.

The SP350 Softphone unifies communications by embedding voice into business processes to bring employees the real-time communications and information they require. With the SP350, employees will have the communications tools they need to work efficiently and productively, whether they're in the office or on the road.

## Solution

### Full-Featured, Multimedia IP Softphone

The SP350 Softphone is a versatile, multimedia IP phone that is installed on a personal computer (PC) or laptop and delivers high quality voice, including wideband codec, via a USB-connected headset/handset. Designed to meet the needs of any employee, it can be used as a primary desktop telephone, a supplemental desktop telephone or a remote/telecommuting device.

- **Primary Telephony Device** – eliminates the need for a standard desktop phone. The SP350 is a space-saving device for organizations that use integrated voice and data applications on a regular basis or for individuals who enjoy the efficiency of communicating via voice and data from their PC or laptop.
- **Remote/Mobile Users** – provides the full functionality and features of a regular desktop phone, plus advanced multimedia applications, through a simple Virtual Private Network (VPN) Internet connection. Mobile users, on the go, can handle calls as if they were in the office and interact via voice, audio, video or text just by logging onto their PC.

### Share Real-Time Information and Ideas

Share real-time information and ideas from a PC or laptop with the versatile SP350 Softphone. When linked together across an NEC IP network, SP350 users can collaborate and interact with each other in an exciting variety of ways:

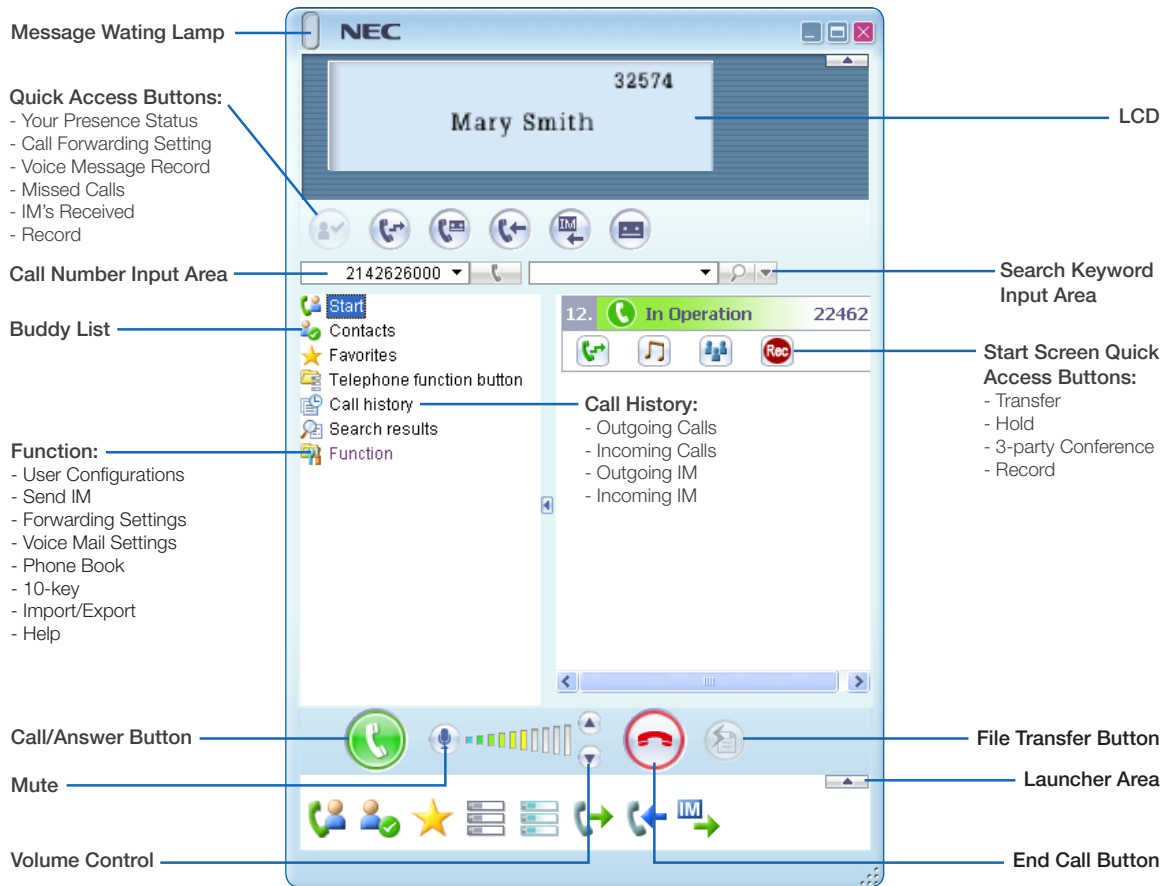
- **Audio and videoconferencing** – allows for easy set-up and participation in conference calls
- **Presence** – provides the status of the party users are trying to reach before placing a call
- **Application sharing:**
  - Permits users to share up to 16 files at one time through peer-to-peer and conference call environments, and are synchronized between all participants
  - Provides the capability for all participants to write in text or insert graphics on a shared document
  - Allows participants to save inserted text/graphics in Microsoft® Word or PowerPoint® documents

- **Markup pen** lets users redline a portion of a shared document
- **Whiteboard** allows users to review, create and update graphic designs in real-time
- **Instant Message/Chat** enables users to correspond in real-time in either a peer-to-peer or broadcast arrangement while engaged during a call or not – up to eight parties can chat together at the same time
- **File Transfer** provides an easy method to send one or more files while in a call by simply selecting the file and dropping it into a person's participation file
- **Call Log** enables the storage of information about outgoing/incoming calls, missed calls as well as recorded call files
- **Call Record** allows users to keep a recording of calls and is an effective tool to use to measure performance, improve training, ensure compliance and evaluate overall performance

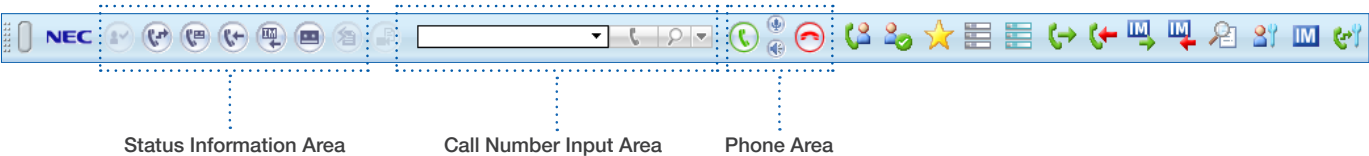
## Easy-To-Use Intuitive Interface

The SP350 Softphone offers two types of graphic user interface (GUI) displays, standard and toolbar. The standard version offers a stylish intuitive interface that can be minimized to a user's task tray when not in use. The main view provides quick and easy access to various settings, a user's presence status, call control buttons and contacts. The toolbar version offers all of the same features and functionality, but in an efficient, easy-to-use toolbar that does not overlap other application windows. The SP350 also provides Microsoft® Office Outlook® integration support for voice calling functions.

### Standard View



### Toolbar View



## Improve Efficiency and Productivity

Placing a call is as easy as entering a phone number or dialing from a contact list or call history. Also, with a simple drag and drop, the SP350 allows telephone dialing from other telephone directory applications such as Microsoft Outlook, HTML pages, Microsoft Word documents, etc. Additionally, the space bar can be used as a shortcut to make, answer or release a call.

With the addition of Presence, employees will know who is available and when. No more customer calls transferred to voicemail. Calls can be directed and placed to people that are known to be available. By providing quick access to the people and numbers employees need, the SP350 helps improve efficiency and enhance productivity.

## Features and Specifications

Features				
<b>SP350 Standard Call Features</b>	<ul style="list-style-type: none"> <li>• Caller ID Display</li> <li>• Call Deflection</li> <li>• Call Transfer</li> <li>• Call Hold</li> <li>• Call Record</li> <li>• Call Conferencing up to 8 People</li> </ul>	<ul style="list-style-type: none"> <li>• Do Not Disturb</li> <li>• Last Number Redial</li> <li>• Voice-Mail Integration</li> <li>• 32 Programmable Line Keys</li> <li>• Speed Dial/ DSS buttons</li> <li>• Headset Volume and Muting</li> </ul>	<ul style="list-style-type: none"> <li>• Controls</li> <li>• Ringer Volume Control</li> <li>• Multiple Audio Algorithms</li> <li>• Supported (G.711 and G.729a)</li> </ul>	
<b>SP350 Applications</b>	<ul style="list-style-type: none"> <li>• Collaboration Integration</li> <li>• Video Conferencing up to 8 People</li> <li>• File Transfer</li> <li>• Application Sharing</li> </ul>	<ul style="list-style-type: none"> <li>• Multipoint Application Sharing</li> <li>• White Boarding</li> <li>• Markup Pen</li> <li>• Presence</li> </ul>	<ul style="list-style-type: none"> <li>• Instant Messaging</li> <li>• Chatting</li> <li>• PHS/PCS Compatibility</li> </ul>	
<b>Other SP350 Standard Functions</b>	<ul style="list-style-type: none"> <li>• Compatibility with most VPN configurations</li> <li>• Configurable Online Displays</li> <li>• Convenient Keyboard Shortcuts - for quick answer and disconnect</li> </ul>	<ul style="list-style-type: none"> <li>• Fast Access Buttons</li> <li>• Drag and Drop Dialing</li> <li>• Call History and Chatting Logs</li> <li>• Keyboard or Screen Dial Pad</li> </ul>	<ul style="list-style-type: none"> <li>• Built-in Voice Recording</li> <li>• 6/8 Party Audio/Data Conferencing</li> </ul>	
SP350 Softphone Specifications				
System Requirements	NEC Communications Servers	SP350 Modes		
		Business	UCE ACD (CCWorX-ACD)	Virtual PC (VPCC)
	<ul style="list-style-type: none"> <li>• UNIVERGE SV8500 (R1 software or later)</li> <li>• UNIVERGE SV8300 (R4 or later)</li> </ul>	<p style="text-align: center;">✓</p> <p style="text-align: center;">✓</p>	<p style="text-align: center;">✓</p> <p style="text-align: center;">✓</p>	<p style="text-align: center;">✓</p> <p style="text-align: center;">✓</p>
<b>PC</b>	IBM-PC/AT Compatible Machine			
<b>OS (Operational Specification)</b>	Windows® 2000(32bit) Professional SP4 or later, Windows XP(32bit) Professional SP2 or later, Windows Vista(32bit) Business, Windows 7.0 & 8.0 (32 bit and 64 bit) Ultimate, Enterprise and Professional			
<b>Memory (Operational Specification)</b>	1GB or more			
<b>CPU (Operational Specification)</b>	Pentium® III 1GHz equivalent or more In case of data meeting: Desktop PC – Pentium4 2GHz equivalent or more Note PC – PentiumM 1GHz equivalent or more			
<b>Hard Drive (Operational Specification)</b>	150Mb or more of empty capacity (except data file save area)			
<b>LAN Interface</b>	10/100/1000 Mb Ethernet			

Empowered by Innovation



Corporate Headquarters (Japan)  
NEC Corporation  
[nec.com](http://nec.com)

North America (USA & Canada)  
NEC Corporation of America  
[necam.com](http://necam.com)

APAC  
NEC Asia Pacific Pte Ltd  
[nec.com.sg](http://nec.com.sg)

NEC Enterprise Solutions  
NEC Europe Ltd  
[nec-enterprise.com](http://nec-enterprise.com)

**About NEC Corporation of America** Headquartered in Irving, Texas, NEC Corporation of America is a leading provider of innovative IT, network and communications products and solutions for service carriers, Fortune 1000 and SMB businesses across multiple vertical industries, including Healthcare, Government, Education and Hospitality. NEC Corporation of America delivers one of the industry's broadest portfolios of technology solutions and professional services, including unified communications, wireless, voice and data, managed services, server and storage infrastructure, optical network systems, microwave radio communications and biometric security. NEC Corporation of America is a wholly-owned subsidiary of NEC Corporation, a global technology leader with operations in 44 countries and more than \$32.6 billion in revenues. For more information, please visit [necam.com](http://necam.com).

SW09008 | v.01.31.14

© 2014 NEC Corporation. All rights reserved. NEC, the NEC logo, and UNIVERGE are trademarks or registered trademarks of NEC Corporation that may be registered in Japan and other jurisdictions. All trademarks identified with ® or ™ are registered trademarks or trademarks respectively. Models may vary for each country. Please refer to your local NEC representatives for further details.